



ONBOARD INTEGRATED SOFTWARE

- Crew Management
- Supplies System (Procurement)
- Document Management
- Risk Assessment
- Vessel Operations
- Live Vessel Performance Monitoring



FINANCIAL MODULES

- Marine Accounting
- Budgeting
- Fixed Assets
- Marine Claims

COMMERCIAL SYSTEMS

- Voyage Estimation
- Freight & Hire
- Port Expenses
- Marine Claims
- Bunkering
- Emissions Calculator

TECHNICAL MODULES

- Crew Management Payroll
- Supplies System
- Document Management
- Vessel Operations
- Risk Assessment
- Vessel Performance

Bunkering Software

ISM Software

Vessel Crewing Software

Vessel Operations Software

PMS Software for Ships & Rigs

Marine Accounting Software

Freight Collection Software

Shipmanagement Software

Complete On-board Software

Voyage Estimation Software

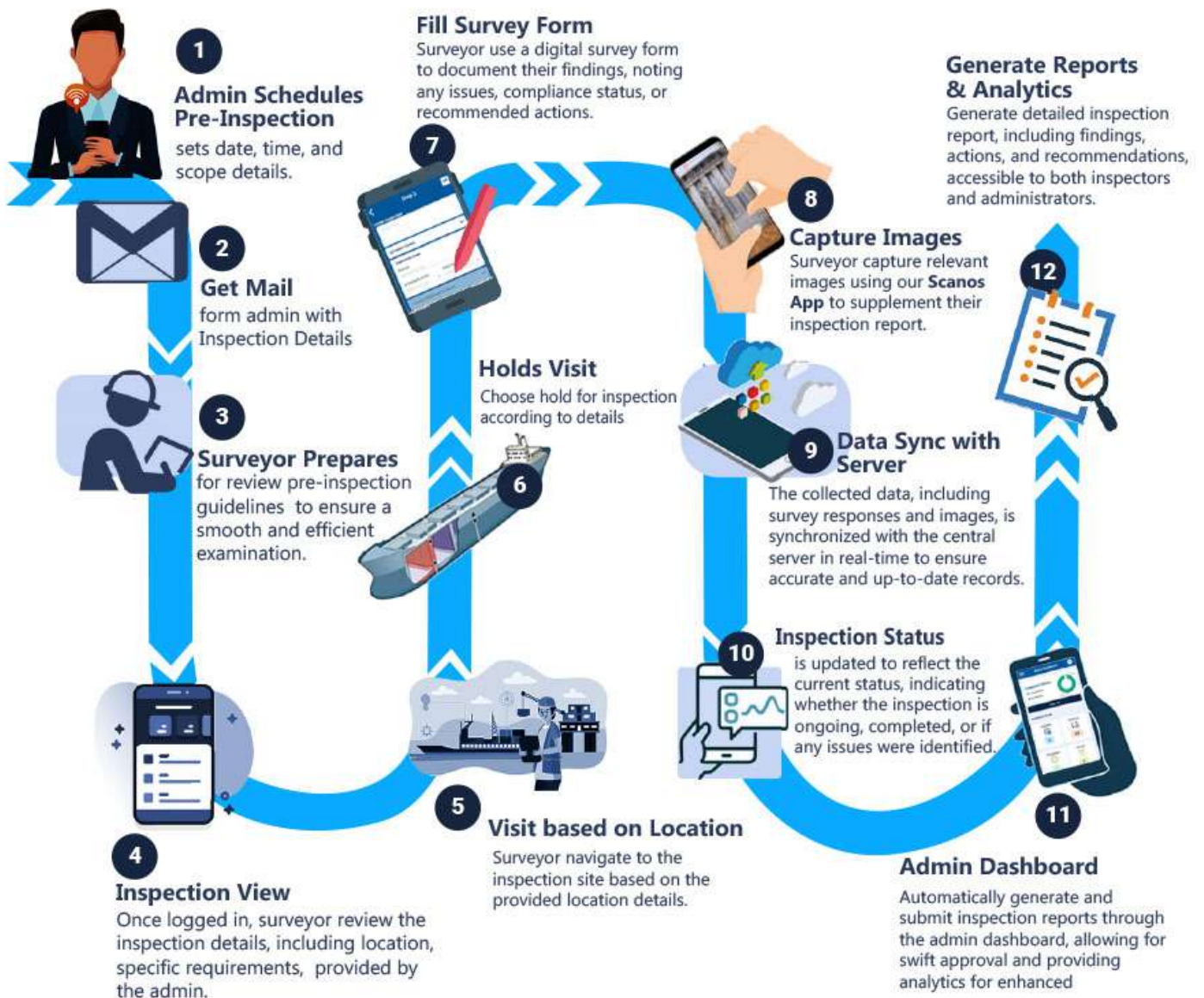
Shipboard MGA Software

Web Based Integrated Shipping ERP

Web Based Shipmanagement Software

Cloud Based Shipmanagement Software

EEOI SEEMP Calculations Software



BUNKERING DEPARTMENT & ADJACENT FUNCTIONS



A Proven Solution for Your Business

Technology to transition to cleaner fuels

Complete automation

Data-driven decisions

Better cash flow and capital management

Regulatory compliance

Spot and contract buying

Pre-deal analysis and decision support

Contract management

The best fuel deals

Counterparty and invoice management

FLEET MANAGEMENT

We specialize in optimizing fleet management, ensuring vehicle efficiency, safety, and cost-effectiveness from acquisition to disposal.

Planned Maintenance System



Allows to manage both planned and unplanned maintenance jobs of the vessels

Stores & Procurement System



Allows to manage the entire procurement process

Quality & Safety Management



Manage the Safety Manuals, Audits, Inspections, Vetting and Incidents

Vessel Performance System



Collect and publish noon reports to all concerned stakeholders

Data Analytics And Kpis System



Transform all data collected into graphical charts and reports that provide deep insights on key performance indicators

Crew Management System



Helps maritime fleet owners, managers and crew management companies manage the crewing related activities for their vessels

Products in the Fleet Management Solution

SHIPMENT

Shipment management is a cornerstone of logistics and supply chain operations, ensuring smooth movement of goods worldwide. Our company specializes in comprehensive solutions, offering efficient logistics management and a wide range of services tailored to meet diverse business needs.



Key Features

- User Registration and Authentication
- Shipment Management & Documentation
- Real-Time Tracking & Status Updates
- Rate Calculation and Payments
- Route Optimization and Scheduling
- Inventory Management
- Cargo Handling Instructions
- Customer Support
- Analytics and Reporting
- Compliance and Security
- Mobile Accessibility



Shipment Risk

- Cybersecurity Risks
- System Vulnerabilities
- Operational Disruptions
- Data Management Risks
- Human Factors
- Technological Advances
- Regulatory Compliance



Mitigation

- Conduct Regular Security Audits
- Keep Software Updated
- Use Reliable Vendors
- Implement Data Backup and Recovery Plans
- Provide Regular Training to employees
- Adopt New Technologies Carefully
- Integrate Securely
- Promote Security Awareness



Ai IN TRANSPORTATION

Improving Navigation: AI, with tools like OpenCV and TensorFlow, helps ships navigate safely by recognizing and interpreting maritime surroundings. This reduces the risk of accidents and ensures smoother journeys.



Enhancing Emergency Response

By using object detection powered by AI, ships can identify potential hazards in their vicinity. This technology alerts crews to obstacles, helping them respond quickly to prevent accidents and ensure the safety of passengers and cargo.

OPTIMIZING TRAFFIC MANAGEMENT

AI algorithms analyze maritime traffic patterns, helping authorities make informed decisions about routes and schedules. This optimization reduces congestion, improves efficiency, and enhances overall safety in waterways.

BEST-IN-CLASS TECHNOLOGY USED



TECHNOLOGY STACK

